

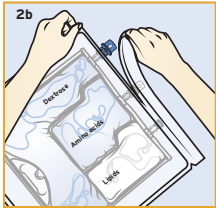
Activation instructions

1 INSPECT BAG PRIOR TO ACTIVATION

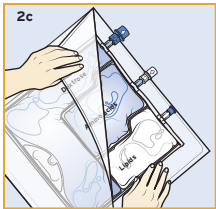
- Kabiven and Perikabiven are three-chamber bags:
 - One chamber is **WHITE**.
 - Two chambers are **CLEAR**.
- Discard bag if:
 - Overpouch is **OPENED** or **DAMAGED**.
 - More than one chamber is **WHITE**.
 - Solution is **YELLOW**.
 - Seals are already **BROKEN**.

2 REMOVE OVERPOUCH

- Place bag on a clean, flat surface.
- Tear from overpouch notch, located close to the ports.



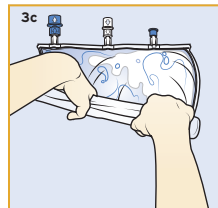
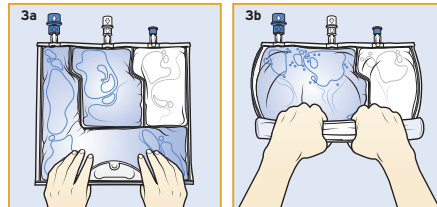
- Tear long sides open to access the inner bag.



- Discard overpouch and oxygen absorber.

3 ACTIVATE BAG

- Place bag on a clean, flat surface with text side up and ports pointing away from you.
- Roll **tightly** from top of bag down toward ports.
- Apply pressure** until both vertical seals break and entire contents are white. It may take up to 5 seconds of continued pressure to break vertical seals.



NOTE: Both vertical seals must be broken from bends to ports. Upper section of vertical seals and horizontal seal may remain unbroken.

- After both vertical seals are broken, mix contents thoroughly by inverting the bag at least three times to ensure a homogeneous mixture.

4 INSPECT BAG TO CONFIRM ACTIVATION

- An activated bag has both vertical seals broken from bends to ports and entire contents are white.

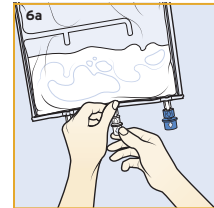
5 IDENTIFY CORRECT PORT

- Additive port is **WHITE** with arrow pointing toward bag.
- Infusion port is **BLUE** with arrow pointing away from bag.

6 MAKE ADDITIONS (if prescribed)

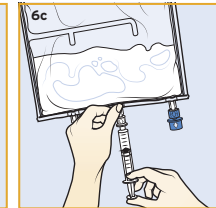
△ WARNING:
Ensure additives are compatible.

- Immediately before injecting additives, break off the **WHITE** tab on the additive port cap with the arrow pointing toward the bag.



- Hold base of additive port horizontally.

- Insert needle horizontally through the center of additive port's septum and inject additives.



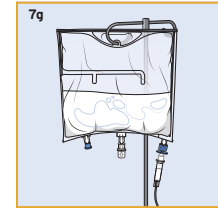
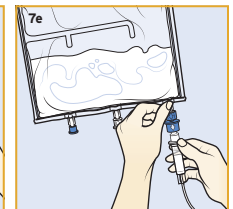
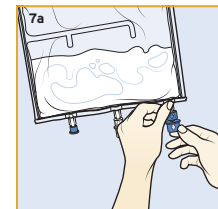
- Repeat as necessary using aseptic technique.

- Mix thoroughly after each addition.

NOTE: The membrane of additive port is sterile at first use. Use aseptic technique for subsequent additions. The septum can be pierced up to 10 times with the recommended needle size 18-23 G 1½ inches (40 mm).

7 SPIKE AND HANG BAG

- Break off the **BLUE** tab on the infusion port with the arrow pointing away from the bag.
- Use a non-vented infusion set or close the air-inlet on a vented set. It is recommended to use a 1.2 µ in-line filter.
- Close the roller clamp of the infusion set.
- Hold the base of infusion port.
- Insert spike through infusion port by rotating your wrist slightly until the spike is inserted.
- Lift and hold the bag with both hands.
- Hang the bag by hole below handle.



NOTE: The membrane of infusion port is sterile. Use infusion sets (according to ISO Number 8536-4) with an external spike diameter of 5.5-5.7 mm.

For single use only. Discard unused portions.

WARNING: DEATH IN PRETERM INFANTS

- Deaths in preterm infants after infusion of intravenous lipid emulsions have been reported in the medical literature.
- Autopsy findings included intravascular fat accumulation in the lungs.
- Preterm infants and low-birth-weight infants have poor clearance of intravenous lipid emulsion and increased free fatty acid plasma levels following lipid emulsion infusion.

Please see accompanying full Prescribing Information, including **Boxed Warning**, for Kabiven and Perikabiven, or visit www.freseniuskabinitrition.com/products/kabiven-perikabiven/

KABIVEN®
(Amino Acids, Electrolytes,
Dextrose, and Lipid Injectable
Emulsion), for intravenous use

PERIKABIVEN®
(Amino Acids, Electrolytes,
Dextrose, and Lipid Injectable
Emulsion), for intravenous use